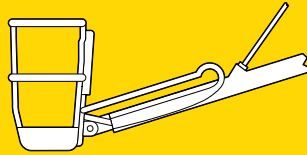




This highly articulated unit can position workers 26' 9" below the bridge deck and up to 19' 6" under the bridge deck. It is a truck mounted bridge access machine designed for inspection and installation services.

## TELESCOPING BASKET



- **TRUCK-MOUNTED - NO TAILSWING**
- **FOUR HYDRAULIC STABILIZERS**
- **SELF-LEVELING WORK PLATFORM**
- **INDEPENDENT CONTROLS**



## UTILITY INSTALLATION

After installing over 600,000 linear feet of utilities under virtually every profile of bridge, we fully understand the associated challenges. We would love to assist on your next project and help make it go as smooth as possible.

## BRIDGE INSPECTION

Bridge Masters Inc. has over 2 decades of hands-on experience in this specialized field. Through these years we have been vigorously perfecting our methods and machines. Allow us to help you benefit from these refinements.

➤ **Increase Productivity**

➤ **Conserve Corporate Resources**

➤ **Get Answers from Master Bridge Technicians**

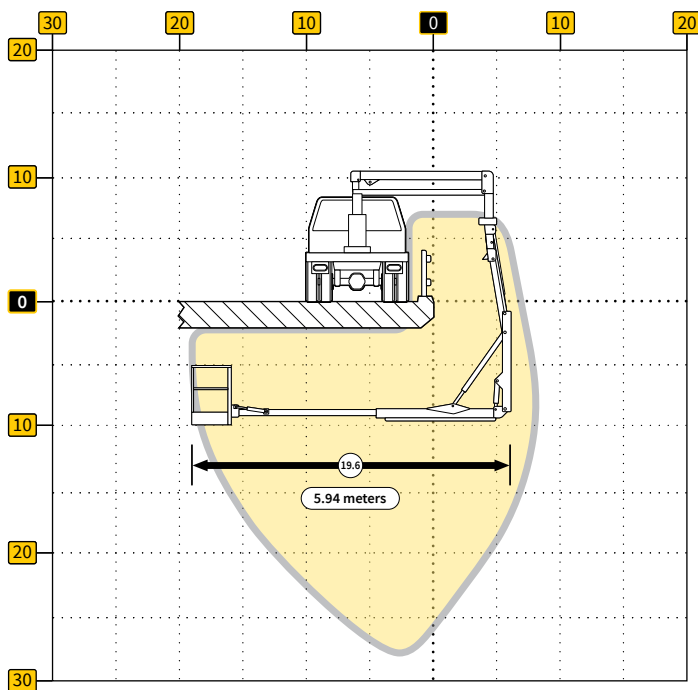
# BMI-220 Compact/Innovative Reach Capability

Boom System with Double-rotation, Triple-lifts, and Telescoping Basket

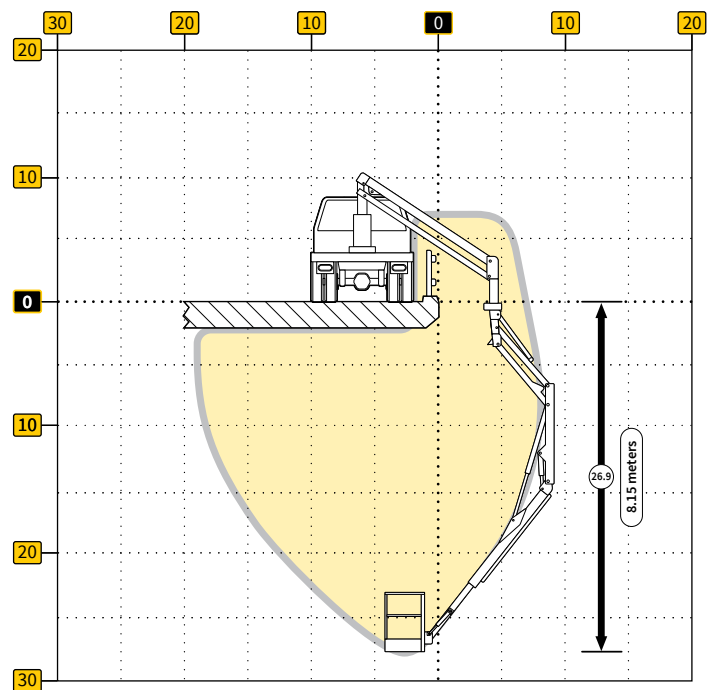
## SPECIFICATIONS

PLATFORM SPECS		MAXIMUM REACH		ft/m	VEHICLE INFO
Working Surface	24" x 36" x 44" 61 x 92 x 112mm	Under Reach	from outside stabilizer edge	19.6/5.94	For more specific vehicle options, capabilities, and dimensions please contact one of our specialists at:  <b>Todd@bridgemastersinc.com</b> or call <b>1.888.851.0744</b>
		Under Reach	from outside center of truck	13.6/4.12	
Working Payload	500 lb/225 kg	Down Reach	from level road surface	26.9/8.15	
		Overhead Reach	from level road surface	24.6/7.47	

**Max Horizontal Reach Under Bridge**



**Max Vertical Reach Below Bridge**



### INDEPENDENT CONTROLS

The BMI-220 is designed with a fully proportional and independent electro-hydraulic boom control system. This increases accuracy and provides a broader range of control over each movement.

### UNIQUE BOOM CONFIGURATION

Our unique configuration consisting of three lift booms, two rotation controls, and a telescope/retract boom, provides "down and under" reach into awkward locations without needing to move the truck.

### DEMOUNTABLE CRANE UNIT

The BMI-220 offers the efficiency option of demounting the crane unit from the truck. This allows the truck to be utilized elsewhere, and the crane can simultaneously remain in operation for bridge work.

