



ASPEN B-32 Medium Scale/Max Versatility

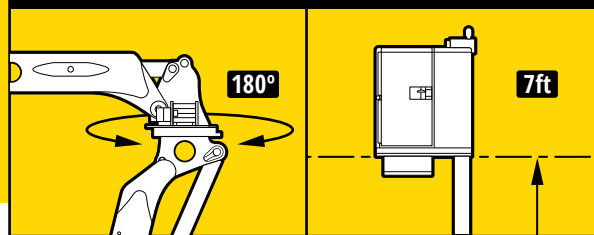
A lightweight highly maneuverable UBIT with an extensive reach



Aspen B-32 - Innovation like no other

A Bridge Inspection Unit designed for maneuverability and light weight, with a 33 ft downreach, sliding counterweight stabilizers, and a 7 ft platform extension.

ROTATING TURRETS / TELESCOPING PLATFORM



- **THREE ARTICULATING BOOMS**
- **A TELESCOPING THIRD BOOM**
- **WITH TWO ROTATING TURRETS**
- **SLIDING COUNTERWEIGHTS**



UTILITY INSTALLATION

After installing over 600,000 linear feet of utilities under virtually every profile of bridge, we fully understand the associated challenges. We would love to assist on your next project and help make it go as smoothly as possible.

BRIDGE ACCESS

Bridge Masters Inc. has over two decades of hands-on experience in this specialized field. Through the years we have been vigorously perfecting our methods and machines. Allow us to help you benefit from these refinements.

➤ **Increase Productivity**

➤ **Conserve Corporate Resources**

➤ **Get Answers from Master Bridge Technicians**

ASPEN B-32 Medium Scale/Max Versatility

A lightweight highly maneuverable UBIT with an extensive reach

SPECIFICATIONS

PLATFORM SPECS

Main Basket (in)	38" x 54"
Main Basket (mm)	965 x 1371 mm
Height (ft/mm)	42" / 1067 mm
Working Payload	600 lb/272 kg

MAXIMUM REACH

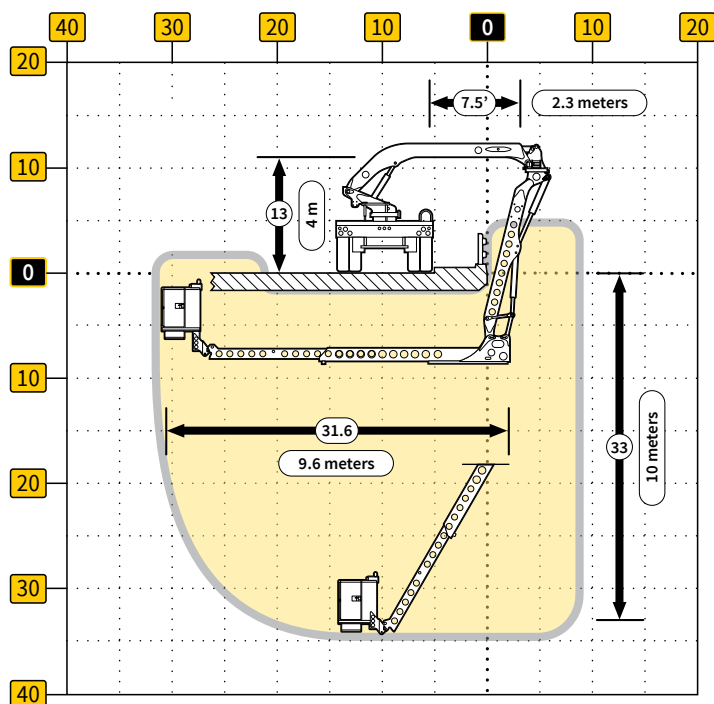
		ft/m
Under Reach	from handrail (42" height)	31.6/9.6
Down Reach	from level surface	33 /10
Down Reach	from handrail	36.5/11

VEHICLE INFO

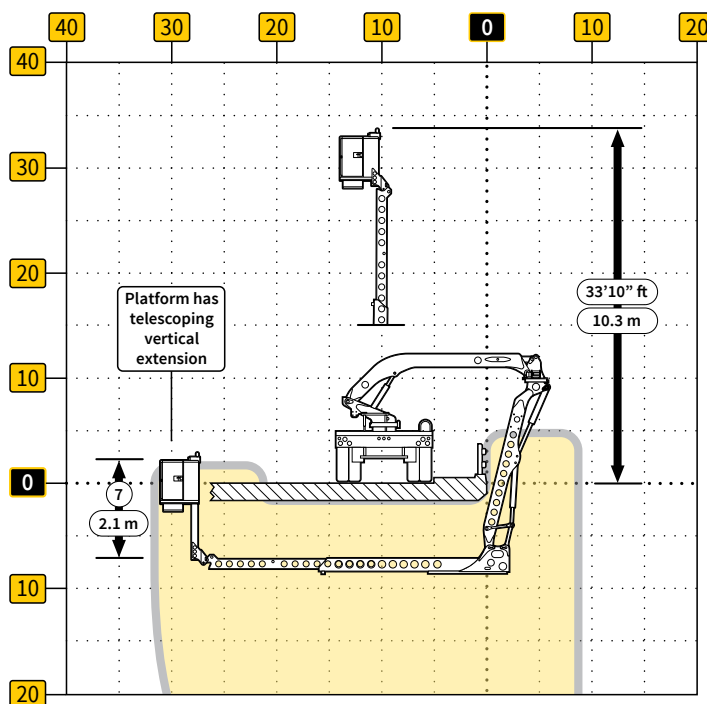
For more specific vehicle options, capabilities, and dimensions please contact one of our specialists at:

Todd@bridgemastersinc.com
or call **1.888.851.0744**

Horizontal & Vertical Underbridge Reach



Maximum Overhead Reach



MANEUVERABILITY

Extremely maneuverable - incorporating three articulating booms, a telescoping third boom, with two rotating turrets, and seven foot platform extension. A plus-one graphic terminal Interface in the cab.

LIGHTWEIGHT

Strategically designed to weigh less than 26,000 GVW. Resulting in an unmatched reach capability vs. the vehicle weight. Making the Aspen B-32 ideal for accessing weight-restricted bridge structures.

STABILIZATION

Exceeds ANSI A92.8 standards. Innovative sliding counterweight system - Outriggers are not required, and counterweights stay within the width of the truck. Stability interlocks with monitoring system.

